

SimaPro 9.4

Full update instructions

Title: SimaPro 9.4 | Full update instructions

Written by: Michiel Oele, Ruba Dolfing, Veronica Grace, PRé Sustainability

Version: 1

Date: June 2022

Copyright: © 2022 PRé Sustainability B.V. All rights reserved.

PRé grants the right to distribute and print the unchanged PDF version of this manual for non-commercial purposes only.

Parts of the manual may be reproduced in other work only after permission and if a clear reference is made that PRé is the author.

About SimaPro

SimaPro was developed by PRé with the goal of making sustainability a fact-based endeavor. PRé has been a leading voice in sustainability metrics and life cycle thinking development for nearly 30 years, pioneering the field of environmental and social impact assessment. We develop tools that help you create value and drive sustainable change.



SimaPro is distributed through a Global Partner Network. All partners were carefully selected by PRé. A partner in your country will act as your local SimaPro sales and support representative and can show you a personal demo or provide more information.

Find your local partner: simapro.com/global-partner-network

Get in touch

T +31 33 450 40 10

E support@simapro.com

W simapro.com | support.simapro.com | pre-sustainability.com

Table of contents

1	Introduction.....	4
1.1	What to expect after an update	4
2	Perform database check if using SimaPro 8	5
3	Updating the SimaPro software	6
3.1	Updating the SimaPro database server (multi-user versions only)	6
3.2	Procedure for updating single-user and multi-user client	7
4	Updating the database	7
4.1	Overview	7
4.2	Installing the full update database	8
4.3	Importing the full update database	9
4.4	Appending substances	12
4.5	Updating links in your projects to ecoinvent 3.8	12
4.5.1	Updating links from ecoinvent 2.2 to ecoinvent 3.8	12
4.5.2	Updating obsolete links	13
4.6	Updating Agri-footprint 5 projects to Agri-footprint 6	15
5	Contact us	16

1 Introduction

This document describes how to update your current software and database from SimaPro 8 or 9.0 to the latest release of SimaPro. In the [What's new in SimaPro 9.4](#) manual, you will find further information about changes in the data, methods, and software.

The update procedure can be summarized as follows:

1. **Software update:** Update your SimaPro single-user or multi-user client software to SimaPro 9.4. For multi-user licenses, you also need to update the SimaPro database server.
2. **Database update:** Import the updated database which includes the new and updated data and methods. This part can take at least a couple of hours – depending on the size of your database.

Please read on for detailed instructions. Should you still have questions, please contact your local [SimaPro partner](#) or SimaPro Support by email at support@simapro.com.

Single-user update video

The generic SimaPro update procedure for single-user is also explained in the updating SimaPro video series. You can check them out in our [SimaPro Help Centre](#).

1.1 What to expect after an update

In SimaPro, the software is separated from the database. Thus a SimaPro update consists of an update of the software components, in addition to an update of the database contents with additional steps like appending substance and replacement of processes. Only after you have done both will you have completed the update.

Please note that every update is unique and may contain special instructions for that particular update, so please make sure to go through the update instructions carefully.

The frequently asked questions below provide a better understanding of what to expect after an update:

- **What if I only update the software?**

When you update the software only, your database contents remain unchanged. So, essentially you get a newer software version that contains new software features and fewer bugs. Again, it is important to realize that a software update does not change any library, project data, or methods in your database.

Example: You used to work with SimaPro 9.2 with ecoinvent 3.7.1. If you only do the software update, your version will be updated to SimaPro 9.4, but you will still be working with ecoinvent 3.7.1 (and not ecoinvent 3.8).

- **After a software update, why do I sometimes need to do a technical conversion of the database when I first open it in SimaPro?**

A technical conversion allows your database to be opened by the newer software version but does not change the contents of the database.

Please note that once a technical conversion takes place, you cannot open that particular database with older SimaPro versions.

- **After I update the database, what happens to my data?**

Below is an overview of how your data *may* change – but please keep in mind this depends on whether the libraries and methods you are using have been updated in that specific release.

- **Library processes:** in most cases*, library processes will be automatically updated. So, for example, an ecoinvent process from version 3.7.1 will be replaced by an updated version from ecoinvent 3.8.
- **Custom processes:** links to library processes will (in most cases*) be automatically updated to link to the newer version of the dataset. The rest remains unchanged.
- **Default impact assessment methods:** the default impact assessment methods originally provided by PRé will be automatically updated (replaced) by the newer version – given that you did not change the name of the method.
- **Custom impact assessment methods:** these will remain unchanged.
- **Substances:** appending may merge one or more synonyms to one substance name and could change the result if the “final” substance is included in an impact assessment method and the previous was not.

**Sometimes there are processes that become obsolete and are not automatically updated. These need additional handling by the user.*

- **After a software update, can I expect my results to change?**

No, as you have not (yet) updated the database.

- **After a database update, can I expect my results to change?**

Most probably yes – that could be due to the changes in the library data or changes to the impact assessment method(s) used.

2 Perform database check if using SimaPro 8

Before you update your software to SimaPro 9.4, we recommend that you first carry out a database check if you are still using SimaPro 8. This will avoid you from converting a potentially corrupt database to SimaPro 9 which can make it harder to repair. **You only need to do this step for the database(s) that you intend to update.**

To carry out a database check:

- Open the database: File > Open SimaPro Database.
- Choose File > Database management > Check. This check may take a while.

- If the check shows no errors, please proceed with [section 3](#). If the error shows errors that can be repaired automatically, please do so and then proceed with [section 3](#).
- If other errors are shown, with no possibility of repair, please select Store. This will save the error log as a .txt or .xls file. Send the file as an attachment to support@simapro.com and we will advise you on the next steps.

3 Updating the SimaPro software

3.1 Updating the SimaPro database server (multi-user versions only)

Single user vs. multiuser

If you are working with a single user SimaPro license please start with [section 3.2](#). Updating the database server is only relevant for multi-user licenses.

We recommend that multi-user updates are done by your network administrator. Please begin by updating the SimaPro database server. It is important to note that the defined Aliases remain intact after the update. To update the SimaPro database server:

1. Download the server installation file [SetupServer940.exe](#) to the machine running the SimaPro database server.
2. Important: right-click **SetupServer940.exe** and select 'Run as administrator' to start the installation.
3. Follow the instructions in the setup wizard. You may be asked for your SimaPro registration name and code. The current SimaPro database server software will be uninstalled and then replaced with the latest software. Note that your database(s) will **not** be uninstalled!
4. If you have installed the database server as a service: check if the service is running via Task manager. Go to the Services tab, and look for nxSPServer2 to check. If it is not running, you can start the service via a right mouse click.

Next, all SimaPro multi-user *clients* have to be updated to SimaPro 9.4. This is explained in the next section.

3.2 Procedure for updating single-user and multi-user client

The procedure for updating the single-user and multi-user SimaPro client software is as follows:

1. Download the SimaPro installation file [SetupSimaPro940.exe](#) to each computer that runs the SimaPro single-user or SimaPro multi-user client.
2. Double-click **SetupSimaPro940.exe** to start the installation. Follow the instructions in the setup wizard. You may be asked for your SimaPro registration name and code. The current SimaPro software will be uninstalled and then replaced with SimaPro 9.4. Note that your database(s) will not be uninstalled!
3. Next, proceed with the database update procedure as described in [section 4](#).

4 Updating the database

4.1 Overview



BEFORE YOU START

Updating/importing a SimaPro database can take 4-6 hours, depending on the size of your database as well as your computer specs. Please be patient throughout the process (especially at 96% when SimaPro appears unresponsive), as aborting or cancelling the procedure can lead to database corruption.

This chapter describes how to update your database. This part can take at least **4-6 hours – depending on the size of your database**. The update process consists of four parts:

1. Installing the Full Update database that contains the new data.
2. Importing the Full Update database into your SimaPro database(s).
3. Doing an append action to merge synonyms in the substance list.
4. ((Optional) Updating links in your projects to the most recent data libraries, or replacing links to obsolete processes.

These steps are described in detail in the following sections. In Box 1 and 2 you will find tips for updating multi-user licenses and an overview of the default database locations. You have to follow the database update procedure for each SimaPro database that you want to update.

Updating SimaPro Classroom

Owners of an educational Classroom license do not have “local server” database access but should request a temporary single-user license via support@simapro.com to do the update locally. We will include further instructions on how to update.

Box 1. Updating a database in a multi-user environment (not applicable for SimaPro Classroom)

In a multi-user environment, updating a database directly on the database server is very slow due to additional network traffic. If you have one of the professional multi-user licenses, you need to do the database update locally on a (fast) PC with the SimaPro client installed. This is much quicker.

To do that, log in as Manager and check under Tools > User Management that no users are logged into the SimaPro database. If so, you can close SimaPro. Locate the database that you want to update on the server's hard drive (see Box 2 for default locations) and copy these database (a set of 77 numbered *.NX1 files) to your local hard drive. Do this also to the FullUpdate database if you install it on the server. In the "Open SimaPro Database" window, choose "Local server", browse to the directory you copied the database to, and proceed to the import procedure. Continue with the update instructions in [section 4.2](#). After updating, copy the updated database back to its original location on the server.

Box 2. Default directories

SimaPro installs updates in the default database directory if no other location is chosen. The default directory for Windows 10, Windows Server 2012, Windows Server 2016, and Windows Server 2019 is:

C:\Users\Public\Documents\SimaPro\Database\

Some third-party databases will be installed in a subfolder of the default directory.

If you have a multi-user version and cannot find the database in one of the default directories, open the SimaPro database server. In the list of aliases, you can see the location(s) of the database directories that are being used. If you still cannot see the database(s) you expect, please ask your IT department to check if an alias for the location is defined in the SimaPro database server.

4.2 Installing the full update database

Download the file [SetupFullUpdateDatabase940.exe](#) and double-click the file to install the "FullUpdate940" database. Make sure SimaPro is closed otherwise you will receive a warning message. You have to do this on each computer with SimaPro single user installed (you may also copy the files). For the multi-user, one installation is sufficient.

The "FullUpdate940" database will be installed in the default directory (see Box 2 above). Follow the instructions in the setup wizard. This process will install the updated database on your computer, but it will not yet update the active databases.

Multi-user version: since we recommend doing the database update locally, the update database does not have to be installed in one of the locations (directory aliases) defined in the SimaPro

database server. Instead, you can do the update on a local hard drive and then copy your updated database back to the server (see Box 1).

Database management tips

If you notice any older database updates (named Update802, Update850, Update900, or similar), you can delete these with Windows Explorer to free up disk space and avoid confusion. To avoid deleting useful databases by accident, please open each database before deleting it to check for any projects that need to be kept.

4.3 Importing the full update database

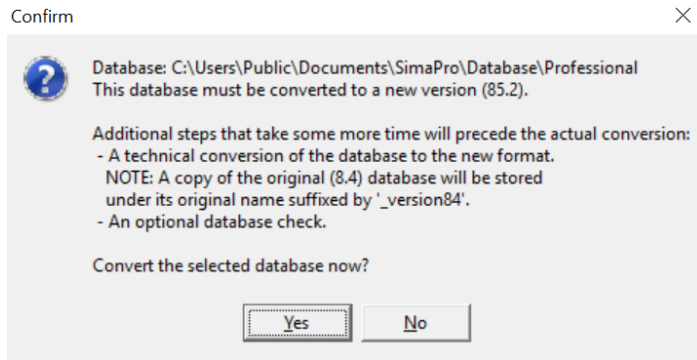


BEFORE YOU START

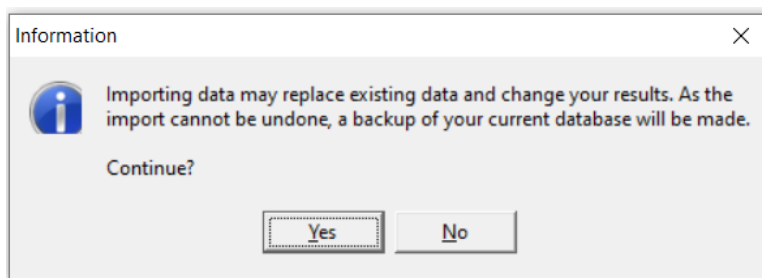
Updating/importing a SimaPro database can take 4-6 hours, depending on the size of your database as well as your computer specs. Please be patient throughout the process (especially at 96% when SimaPro appears unresponsive), as aborting or cancelling the procedure can lead to database corruption.

Follow these steps to import the new data:

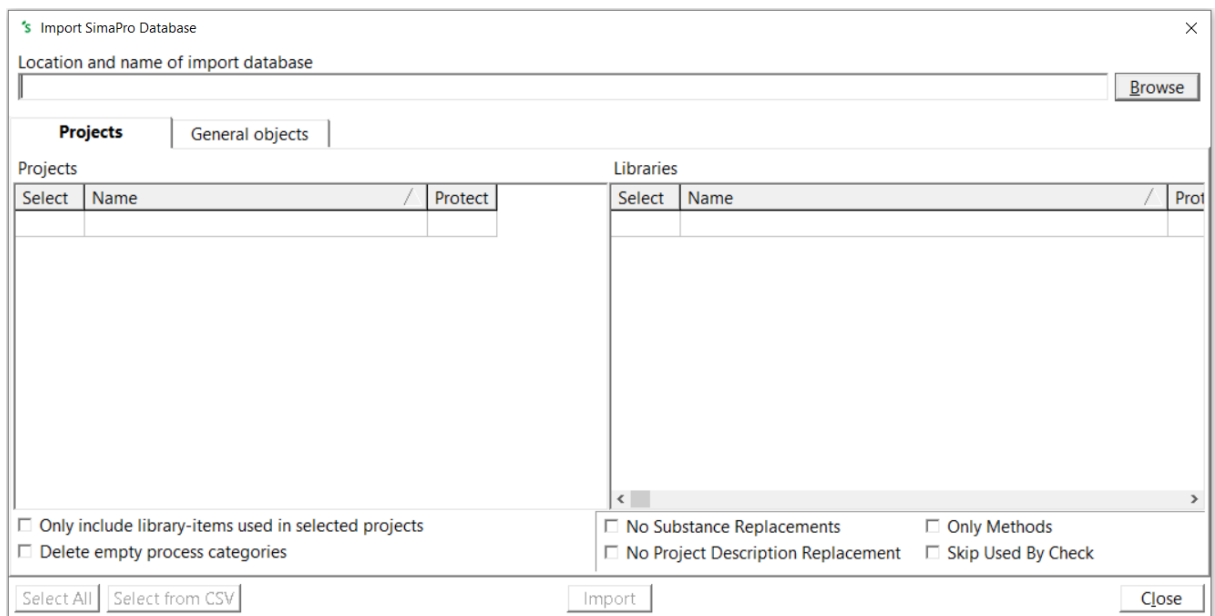
1. Start SimaPro 9.4. If you have a multi-user SimaPro license, first, open a Professional database via the local server and then log in as a Manager. Make sure no other users are logged in at this moment because the database will be locked during import. During the update process, users cannot log in to SimaPro.
2. Check if the database you want to update is open in SimaPro. The database name is found in the blue bar at the top left of the SimaPro window. If the database is not yet opened, go to File > Open SimaPro Database and select the database you want to update (the database you usually work in, for example, the Professional database).
3. **If you are using SimaPro 8:** When opening the database, a technical conversion may take place. **After this conversion, you cannot open the database with older versions of SimaPro. A copy of the database (in SimaPro 8 format) will be created automatically during this process.**



- Go to File > Import SimaPro Database. Click “Yes” to continue when the message below appears.



- The “Import SimaPro Database” dialogue box will appear:

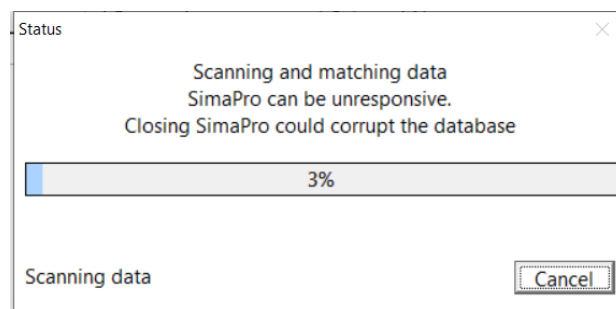


- Click “Browse”. The update database (FullUpdate940) will appear in the “Open Database” dialogue box (in multi-user versions, the field “Server” is also shown).

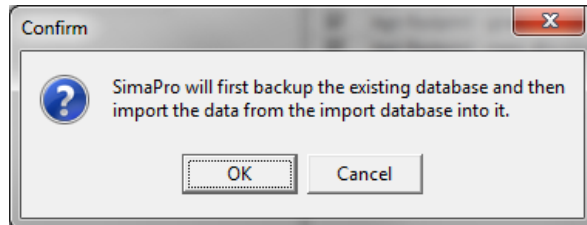
If you do not see the “FullUpdate940” database, click the “Browse” button in the Open database window. By default, the “FullUpdate940” database will be installed in the default

directory (see Box 2 above). Otherwise, browse to the directory where you installed the update database. Then select the “FullUpdate940” database and click “OK”.

7. Click “Open”. You will see the libraries that need to be imported. Select those that you want to import. Next, click “Import”. Alternatively, click “Select all” at the bottom left of the window.
8. The data will be scanned and an overview will be generated of all the data that are added or replaced. We recommend that you save this overview for your perusal. Depending on the amount of libraries that will be imported, this process can take quite some time.



9. Click “OK” to start the import process. Before data importing starts, the program will prompt you to make a backup.



After clicking “OK”, select the folder you want the save to backup file in (the default location is C:\Users\User Name\Documents\SimaPro\Backup). Note: if you click “Cancel”, the update procedure is stopped.

10. The data in the full update database will now be imported into the existing database. This step can take a lot of time especially when it reaches 96%. It can even take up to a few hours depending on the size of the database. SimaPro may seem unresponsive even when the update appears to be finished. For users with multi-user license, see the update tips in Box 1 above to speed up the update process. **Please be patient! Forcing SimaPro to shut down risks database damage!**
11. After the import is successfully completed, your data libraries and methods should be updated. As a quick check: you should now have Agri-footprint 6 economic allocation in the Libraries section.

Box 3. Import errors

Should SimaPro report any import errors, please save the log file and take screenshots if possible. The overview of issues in the log file may help you to find out what went wrong. For assistance, please send an email to SimaPro support at support@simapro.com and include the log file and any screenshots as attachments.

We appreciate it if you could include the results of the database check, which can be done via File > SimaPro Database Management > Check Database.

4.4 Appending substances

The next step is to do an “append substances” action to convert some old substance names in your database to the latest substance naming convention in SimaPro. If you do not do this, mismatches between life cycle inventory and impact assessment data may occur, leading to incorrect LCA results. The replacements are defined in the append file that is installed with the update database.

Appending merges two synonymous substance names into one. For example, CO₂ needs to be appended to Carbon dioxide, the latter being the name used in the most recent version of SimaPro and in the impact assessment methods. Without appending CO₂ to Carbon dioxide, any use of the substance named CO₂ in processes will not show in the impact assessment results.

To perform the Append action:

1. Go to the “Substances” section under “General Data” in the LCA Explorer screen.
2. Click “Append”. A new window will open.
3. Click “Load” on the right-hand side and select the append file: “AppendSubstances940.xlsx”. The append file is found in the same directory as the update database (see Box 2 for default directories).
4. Click “Append” on the right-hand side of the window. After a final confirmation, the substances will be appended. Depending on the size of your database, this may take some time.

4.5 Updating links in your projects to ecoinvent 3.8

4.5.1 Updating links from ecoinvent 2.2 to ecoinvent 3.8

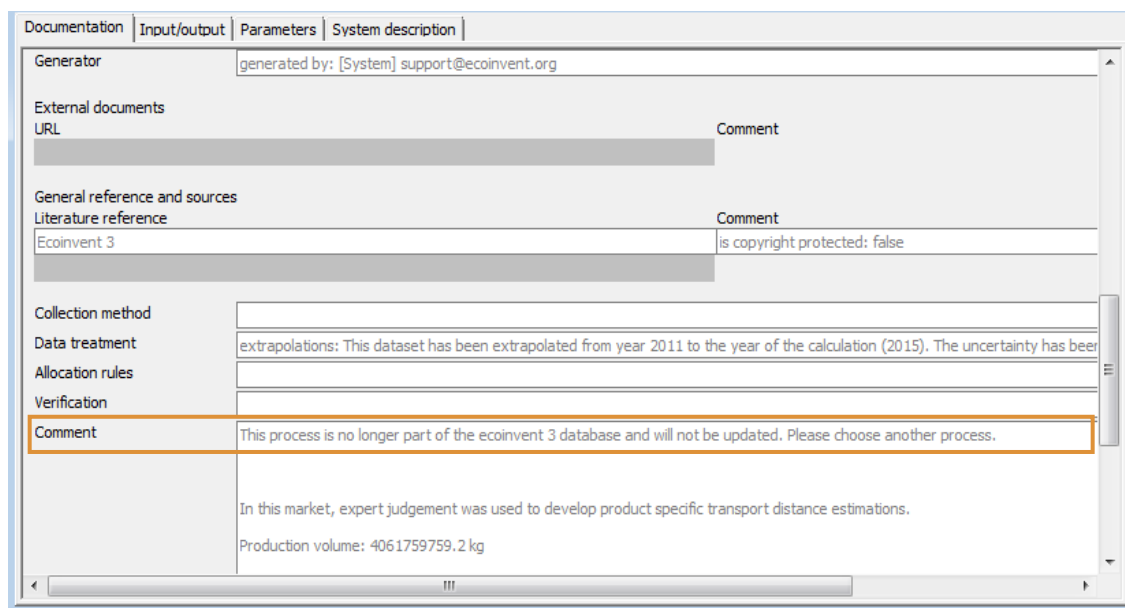
When carrying out the full update database, if the ecoinvent 2.2 data library was available in your database, it will remain alongside the new ecoinvent 3.8 library. Furthermore, any links in your projects to ecoinvent 2.2 will remain intact.

If you wish to change those links from ecoinvent 2.2 to the most recent equivalent version in ecoinvent 3.8 (where possible), you can use the Projects to Libraries Links manager to replace the links manually (please refer to [section 4.5.2](#)).

How can I tell which processes are now obsolete?

The quickest way to review the obsolete processes is by checking the 'Obsolete' sub-categories in the ecoinvent 3.8 processes for material, energy, transport, etc. (Inventory > Processes > Material > Others > Obsolete). In the Documentation tab of these processes, the Comment field states that the correspondence process is no longer part of the ecoinvent 3 database (see screenshot below). If you select any of those processes and click on 'Used by', you will get an overview of the projects which are using the selected obsolete process.

In addition, if you calculate a process or product stage that is or contains an obsolete process, you will get a warning message. The warning message indicates which process(es) are obsolete. You can then replace them using the replacement files (if possible) or manually.



4.5.2 Updating obsolete links

Since ecoinvent 3.1 to 3.7.1 will be replaced by the updated 3.8 library, the majority of links will be updated automatically to ecoinvent 3.8. However, a number of processes are no longer supported and are considered obsolete.

Since you may have used some of these obsolete processes in your projects, PRé has created special replacement files to allow you to change most of these obsolete links from older ecoinvent 3 versions to the correct processes in ecoinvent 3.8 in a fast and easy way.

With this update, the following replacements files are available:

1. Replace EI 3.x to 3.8 APOS library.xlsx
2. Replace EI 3.x to 3.8 Consequential library.xlsx
3. Replace EI 3.x to 3.8 Cut off library.xlsx

Please note that using the replacement files does not replace all obsolete processes. Some processes are disaggregated into more specific products or regions. In these specific cases, users should assume and decide themselves which activity is the best replacement.

SimaPro will generate a warning when you make a calculation and finds that an obsolete process is still being used in your model. In that case, you need to manually replace the process with a process that is more suitable.

Obsolete processes not included in the replacement files

Please review the spreadsheet '[List of Obsolete Processes without Replacement ecoinvent 3.7.1 to 3.8](#)' to check the reason why the former ecoinvent activity does not exist in ecoinvent 3.8 anymore.

Tip for update

It is recommended to **first use the replacement files to replace as many links as possible**. After that, if you receive a message while calculating in SimaPro that your model includes obsolete processes, you can replace those manually. Please refer to [section 4.5.2.1](#) and [section 4.5.2.2](#) below for further instructions.

4.5.2.1 Using the replacement files

Follow the next steps for replacing the obsolete links in your project using one of the replacement files. You can also refer to [this video](#) for general instructions on using the tool: Projects to Libraries Links Manager.

1. Open a project in your updated database. This can be any project.
2. Go to Tools > Projects to Libraries Links Manager.
3. Select the project(s) of which you want to change links (press Ctrl-A to select all projects and Ctrl-Shift-A to deselect). You can use the filter to select project(s) by (part of the) name.
4. Select the ecoinvent libraries where you want to replace the links.

Note: make sure that these ecoinvent libraries are also selected in the Libraries section in SimaPro.
5. Click "Scan".
6. View the links found by clicking on the tab "Links".
7. Click on the "Import replacements" button.
8. Select the appropriate Replacement file which can be found in the database directory (see Box 2) and click "Open".
9. Check the links which are going to be replaced in the column "Replace name".

Note: It is possible that there are no replacements found. This means that the projects you selected do not contain links that can be replaced using the replacement files. Nevertheless, there may still be some links that need to be replaced manually.

10. Store your links in order to be able to check afterward. It is also possible to add new replacement links yourself.
11. Click "Replace" to replace the links to the chosen library. You will get a message on how many links are replaced to the chosen library.

4.5.2.2 Manual replacement (or creating your own replacement file)

Once you determine that your project(s) still contain obsolete links, you can replace these manually by selecting an alternative process in the relevant process or product stages records. You can also use the Projects to Libraries Links Manager to manually replace multiple links that were not replaced using replacement files (please also refer to [this video](#) for an example).

1. Go to Tools > Projects to Libraries Links Manager.
2. Select the ecoinvent libraries where you want to replace the links.

Note: make sure that these ecoinvent libraries are also selected in the Libraries section in SimaPro.

3. Click "Scan".
4. View the links found by clicking on the tab "Links". The column "Child name" shows the library.
5. Double click any of the empty cells you want to replace under the column "Replace name".
6. A dialogue box will open in which you can choose an alternative link in the preferred library. Use the function "Show as list" on the right-hand side of the screen to list all links. Filter the links from the preferred library by entering the suffix of that library in the filter box at the bottom of your screen.
7. Choose the preferred link and click "Select".
8. You will get a message '* links referencing the same product. Use the selected replacement for them too?' These are the same links which are used in different projects or within projects. Choose "Yes" to replace all links. If you click "No" only the selected link will be replaced.
9. Click "Replace" to replace the links. If you want to replace all links at once and you did not finish the work, you can export the previously selected links to Excel and import them at a later stage by clicking "Export replacements" and saving your replacement file.

4.6 Updating Agri-footprint 5 projects to Agri-footprint 6

Starting with SimaPro 9.4, only Agri-footprint 6 economic allocation is included in the default SimaPro databases (Professional, Update940, FullUpdate940). The remaining Agri-footprint 6 mass and energy allocation libraries will be available as [a separate download](#) for free for SimaPro users with a valid subscription or service contract.

Therefore, after completing the Fullupdate940 database import, your Agri-footprint 5 library (if available) will not be automatically updated to Agri-footprint 6. Your Agri-footprint 5 libraries will remain intact, and in parallel you will also have Agri-footprint 6 economic allocation libraries (only).

If you still want to use the mass and energy allocation libraries, you need to download these separately from [this webpage](#) and follow the import instructions provided.

Since the Agri-footprint 5 library is not automatically updated to the Agri-footprint 6 library, PRé and Blonk Consultants created replacement files to switch the links in your project(s) from Agri-footprint version 5 (mass, energy or economic) to version 6 (economic) in a fast and easy way.

With this update, the following replacements files are available

- Replace Agri-footprint 5 Economic to Agri-footprint 6 Economic.xlsx
- Replace Agri-footprint 5 Energy to Agri-footprint 6 Economic.xlsx
- Replace Agri-footprint 5 Mass to Agri-footprint 6 Economic.xlsx

Please use the aforementioned instructions for using replacement files. You can also refer to [this video](#) for general instructions on using the tool: Projects to Libraries Links Manager.

You have now finished the update procedure! Repeat for any other database you wish to update.

5 Contact us

Please contact us or your [local partner](#) if you have questions about new features in the SimaPro software or database, or if you have any other questions related to the update.

- Website: <https://support.simapro.com/>
- Email: support@simapro.com
- Phone: +31 33 450 4010